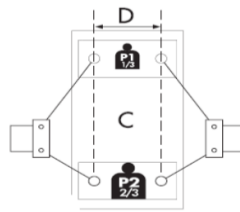
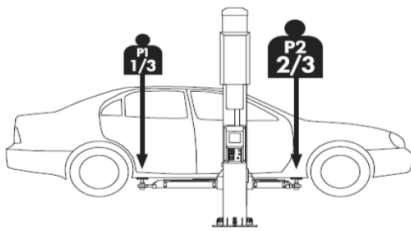


	5.000 kg
	60/60 sg
	2,6 kw
	3ph / 380 V

WEIGHT DISTRIBUTION

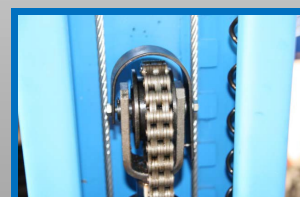
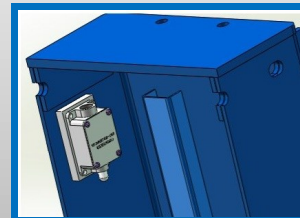


5.0T	710 mm	2620 kg	1310 kg	3930 kg
	800 mm	2750 kg	1375 kg	4125 kg
	900 mm	3000 kg	1500 kg	4500 kg
	1000 mm	3350 kg	1650 kg	5000 kg

Electro-hydraulic 2 post lift with 3 stages symmetric arms. Safety devices and automatic lock release. Track width 2,80 m. and distance between columns 3,00 m.

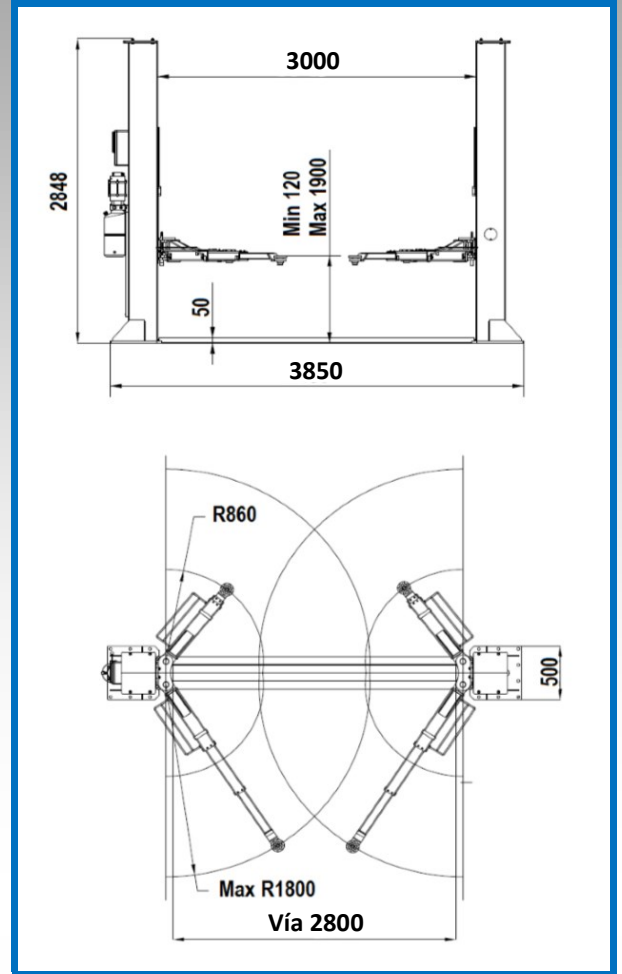
FEATURES

- » **Capacity: 5.000 Kg**
- » Maximum lifting height: **1,83 m**
- » Minimum lifting height: **110 mm**
- » Track width: **2,80 m**
- » **Automatic lock release**
- » Synchronization system by steel cables and limit switch for safety
- » Triplex symmetric arms
- » Robust columns made in steel 5 mm.
- » Mechanical safety operating by the electromagnet



TECHNICAL DATA

Capacity	5.000 kg
Power supply	380 V
Motor power	2,6 kW
System type	Electro-hydraulic
Synchronization type	Steel cable
Lock release	Automatic electromagnet
Maximum lifting height	1900 mm
Minimum lifting height	120 mm
Track width	2800 mm
Overall height	2848 mm
Overall width	3850 mm
Lifting arms	Straight 3 steps
Lifting/lowering time	60/60 sg
Noise level	< 75 dB(A)
Packing weight	1000 kg
Packing size	2875x550x1200 mm



Possibility of installing
Variable speed

NOT INCLUDED ACCESSORIES

